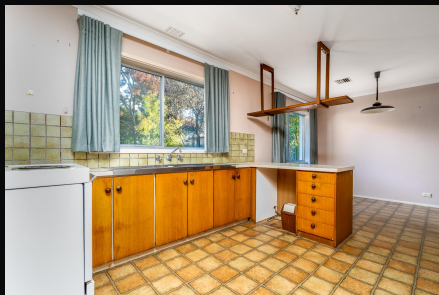


For Sale



104 MacFarland Cres PEARCE

BY NEGOTIATION




Rare opportunity for Inner South 3 bedroom house

This incredible three bedroom home, in largely original condition, offers a blank canvass for anyone looking to take advantage of this unique opportunity to buy and build in the highly sought after Woden Valley.

Set at the front of the block, 104 MacFarland Crescent boasts 3 bedrooms, 1 bathroom, a functional kitchen with open plan dining, spacious lounge, and separate laundry with yard access. Established trees line the yard and lawns, while the single lock up garage sits towards the back, side of the block.

MacFarland Crescent meanders through Pearce, providing access to a daily backdrop of lovely green spaces, tree lined streets and awe-inspiring views of Mt Taylor. Enjoy stunning vistas of Woden Valley, easy access to local schools, amenities, parks and public transport.

With its desirable location, 946m2 block and options for RZ1 dual-occupancy development, this property offers immense potential for developers, investors and families alike.

-  3 Bed
-  1 Bath
-  1 Garage

- 946m2 block
- Open plan kitchen & dining
- Separate living
- Separate toilet
- Close to schools
- Close to shops
- Back deck
- Laundry with backyard access



Are you considering selling
your property? Ask your
Perspective property Agent
about our offer of no
marketing or building report
costs until settlement

Catherine Cox
cate@perspectiveproperty.com.au
0413 892 187