

Pasadena 45+ Hamptons façade.  
Fixed price \$1,157,100\*



**VALUEPLUS DESIGNS**  
OVER \$32K WORTH OF  
ADDITIONAL INCLUSIONS

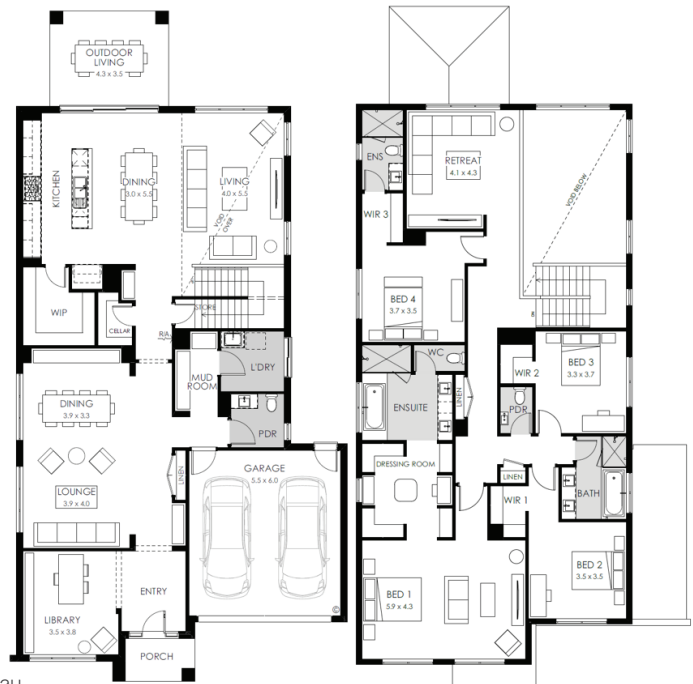
Lot 3221 Button Road,  
Mickleham  
Botanical Estate

Land size:	550m <sup>2</sup>
Home size	412.05m <sup>2</sup>

- Hamptons façade included
- 7-Star energy rating
- Low E Double glazed, thermally broken awning windows
- Fixed site costs
- Metal roof in lieu of roof tiles
- Overhead cabinetry to Butler's Pantry design option (design specific)
- 1000mm island bench extension
- Undermount kitchen sink
- Downlights to the entire home
- 2740mm high ceiling to ground floor
- 2340mm high internal doors & front entry
- 2430mm high recessed stacker door to outdoor living
- Fisher & Paykel dishwasher and compact microwave oven
- 12 month maintenance period & 25 years structural warranty
- Fibre Optic Connection Point
- Recycled Water Connection Point

YOUR LOCAL NEW HOMES CONSULTANT

Luisa Murone 0412 904 377 | [lmurone@boutiquehomes.com.au](mailto:lmurone@boutiquehomes.com.au)



\*Terms and Conditions. Advertised value includes over \$32,000 worth of upgrades based on the Seville 25+ home design. Over \$32,000 worth of upgrades is based on the RRP of Metal Roof in lieu of roof tiles, Butler's Pantry option (not available on the York 26+), 1000mm island bench extension, Polar Double Bowl Undermount kitchen sink, downlights to whole of home, 2740mm ceilings to Seville 25+ York 26+, Barcelona 23+ and to ground floor of Airlie 30+, Montpellier 35+ and Grange 36+ 2340mm internal doors and front entry door, 2430mm high stacker door, Fisher & Paykel freestanding dishwasher and Fisher & Paykel built in microwave. The 'ValuePlus Designs' pricing includes Contempo, Cape, Mode and Cove façade options within the base price. 'ValuePlus Designs' offer only applicable to the Seville 25+, York 26+, Airlie 30+, Barcelona 23+, Montpellier 35+ and Grange 36+ home designs. Speak to your New Homes Consultant for exact value of upgrades on particular home designs. Available for any new Boutique Homes customers, who pays a deposit and signs a Preliminary Works Contract between December 15, 2025 until June 30, 2026. 'ValuePlus Designs' excludes Dual Occupancy or Townhouse designs or packages. Pricing shown is relevant for the current month and is based on a site that's titled at the time of signing a Preliminary Works Contract (PWC). For untitled land, an additional monthly charge for price protection will be applied, based on forecast title date (up to 18 months).

