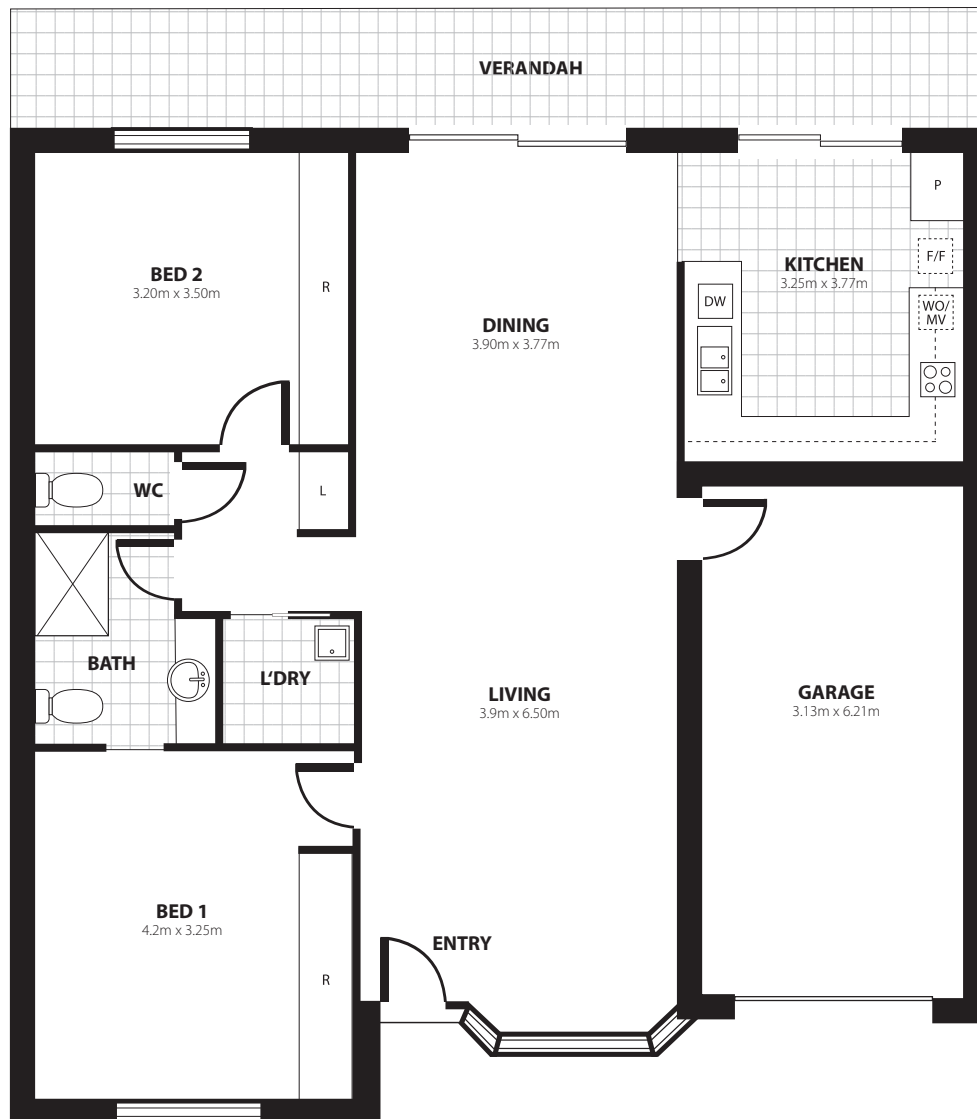


Geelong Grove

Unit 48



Dimension					
Bed 1	4.2m x 3.25m	Dining	3.90m x 3.77m	Kitchen	3.25m x 3.77m
Bed 2	3.20m x 3.50m	Living	3.90m x 6.50m	Garage	3.13m x 6.21m



Contact us

1300 295 834

australianunity.com.au/retirement-communities/geelong-grove

50 Barwarre Road, Grovedale VIC

This plan is subject to change. This diagram is for illustration purposes only and not to scale, *Dimensions are approximate and purchasers should rely on their own investigation for accurate measurements. Actual unit may vary from one shown in this flyer.

© Australian Unity 2023, 271 Spring Street, Melbourne, VIC 3000