

## Comparable Properties

### Recent Sales



4 Schollert Court, Gray

3 2 2

Land size: 809 m<sup>2</sup>

Sold on: Dec 14, 2022

Sold for: \$480,000



3 Lulworth Court, Gray

3 2

Land size: 755 m<sup>2</sup>

Sold on: Aug 23, 2022

Sold for: \$472,500



3 Lulworth Court, Gray

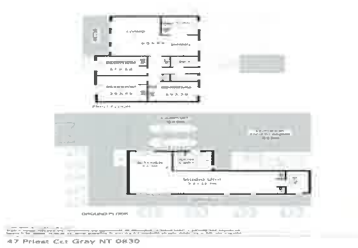
3 2 2

Land size: 755 m<sup>2</sup>

Sold on: Aug 23, 2022

Sold for: \$472,500





47 Priest Circuit, Gray

3 2 6

Land size: 800 m<sup>2</sup>

Sold on: Oct 14, 2022

Sold for: \$520,000



10 Hogan Court, Gray

3 2 4

Land size: 800 m<sup>2</sup>

Sold on: Nov 09, 2022

Sold for: \$455,000

## Currently On The Market



10 Campden Court,  
Gray

4 3 2

Land size: 974 m<sup>2</sup>

Offers over \$669,000



32 Bagshaw Crescent,  
Gray

3 1 4

Land size: 800 m<sup>2</sup>

\$430,000

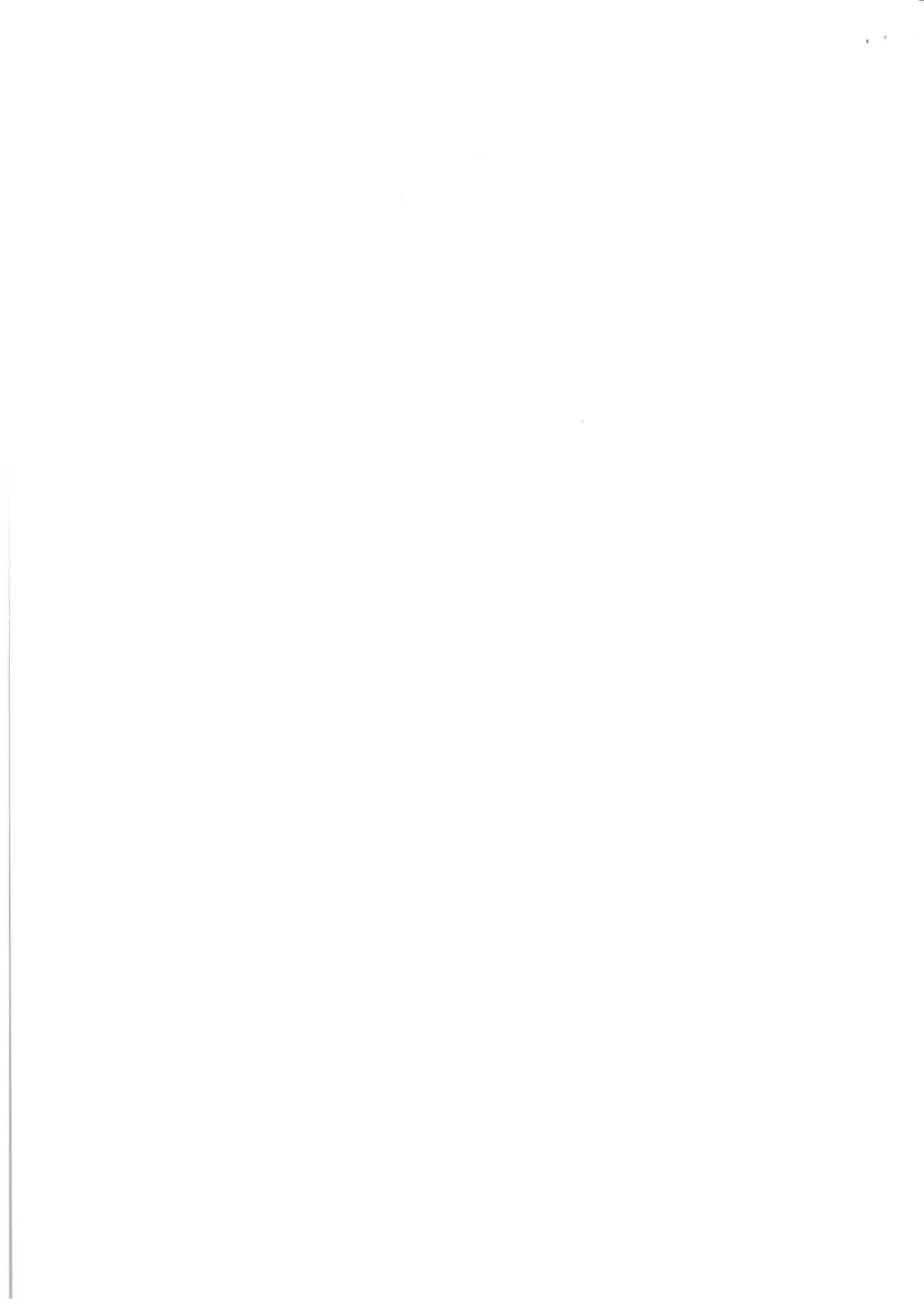


14 Bagshaw Crescent,  
Gray

3 2

Land size: 888 m<sup>2</sup>

NEW PRICE \$425,000





8 Scammell Court,  
Gray

 3  2  2

Land size: 1010 m<sup>2</sup>  
\$480,000



5 Minorelli Court, Gray

 3  1  1

Land size: 802 m<sup>2</sup>  
OFFERS OVER \$399,000



66 Essington Avenue,  
Gray

 3  1

PRICE GUIDE \$440,000



84 Priest Circuit, Gray

 3  2  2

Land size: 751 m<sup>2</sup>  
\$449,000

This information is supplied by Realtair Pty Ltd (ABN 24 608 058 859) on behalf of  
Proprack Pty Ltd (ABN 43 127 386 298)

