

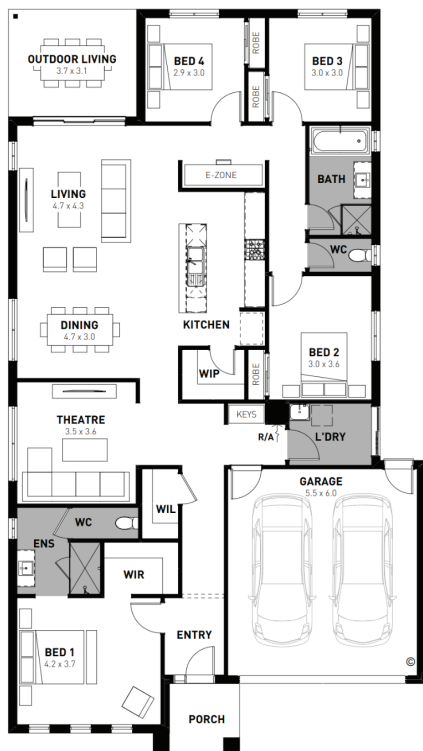
**Up to
\$25,000***
of added
inclusions



Fixed price package
\$794,300*

Lawson Boost 25

4 2 2



Maple Grove Pakenham - 448m²

734 Botanical Boulevard

- # Fixed site costs
- # Exposed aggregate driveway
- # Prescott facade included
- # Downlights to entry, kitchen, dining and living
- # Overhead cabinetry to kitchen
- # Quality floor coverings throughout
- # 2550mm high ceilings to ground floor
- # 20mm crystalline silica-free benchtops to kitchen, bath and ensuite
- # Westinghouse 900mm wide stainless-steel oven, cooktop and rangehood
- # 400mm X 600mm niche to showers
- # Lifestyle Essential Electrical pack
- # Roller blockout blinds (excluding wet areas and entry door sidelight)
- # 25 year structural guarantee & 12 month service



Terms and conditions apply. The 'Boost' is only applicable to specific floor plans and is only available to customers who sign a Preliminary Works Contract (PWC) between 1 Apr - 30 Jun 2026. Up to \$25k worth of inclusions is based on the PRP of overhead cabinetry to kitchen, 20mm crystalline silica-free benchtops to kitchen, bath and ensuite, roller blinds (excluding wet areas) and downlights to kitchen, living, dining and hallway based on the Onyx 21 Boost. The Homebuyers Boost pricing includes Homebuyers Centres Bromleigh, Celine, Prescott and Soul designer facades within the base price. This offer cannot be modified, substituted, redeemed for cash or applied to the base price of the home. Not available with any other discounts, incentives or promotions. Homebuyers Centre reserves the right to update, change or cease this offer at any time. Images are for illustrative purposes only and may depict upgrades, fixtures or fittings not included. See <https://vic.homebuyers.com.au/disclaimer/> for full terms and conditions. The building practitioner is ABN Group (Vic) Pty Ltd trading as Homebuyers Centre CDB-U 49215. April 2026. BHO676

Ashley Mouser
0455 213 290
amouser@homebuyers.com.au