

**UNDER  
\$890K**

**20 WEEKS TO  
COMPLETION**

**1 Week to  
Contract**

**8 Weeks  
Site Start\***

**8 WEEK TO  
SITE START**

Where facade shown, facade may represent offered facade but on different house type and facade colours and materials that may not be available due to land estate guidelines. Price excludes tiles, stone and/or full render to facade treatment, timber windows, landscaping, fencing, driveway, decking, planter box and decorative lights or any change required by Developer to facade. Speak with our New Home Consultant for clarification.

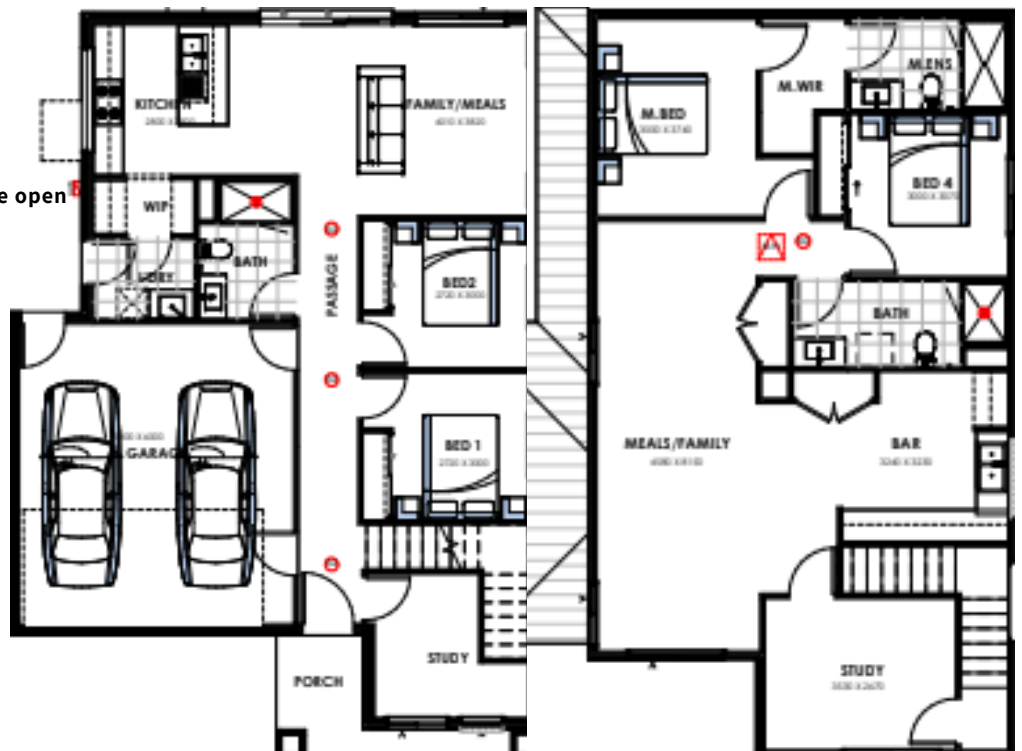
 **4 BDRM**     **400 SQM**  
 **3 BATH**     **2 CARS**

## HOUSE AND LAND PACKAGE \$890,000\*

**LOT 922, HOCK STREET**

### LUXURY INCLUSIONS LIST

- Fixed Site cost\*
- NCC 2022 compliant plan
- Double Glazing windows throughout
- 2590 high Ceiling
- Stone Benchtops through out
- Downlights throughout the house
- Flooring throughout (12mm Laminate in the open areas and carpet in the bedroom)
- 900mm appliances inc. 600mm dishwasher.
- 2.7m high ceiling.
- 2.3m high doors.
- 600X600 Porcelain tiles to wet areas.
- Option between tile & hybrid flooring in open living area
- Downlight throughout the house
- Heat pump
- Upgraded entry door
- Stone in butler pantry with and OHC/UBC
- Powder room
- And much more



### CONTACT

**SAMAN KAUR 21 SEABROOK, READY**  
**PH: 0499517444, 0469735286**

**EMAIL: SAMAN@5ABHOMES.COM.AU**



\*\*Based on land price provided by the Developer as of the said date. All land enquiries to be made direct to the Developer. Land is sold separately by the Developer. Home price based on a standard home, and Inclusions. Home price Freeze upto Feb 2026 however does not include additional costs for delay in land titles further than Feb.2026, or any additional item outside the standard guidelines. \*Fixed site costs are provided based on the preliminary engineering, additional cost may occur if the final developer Engineering is different from the preliminary Engineering. Photography and illustrations to be used as a guide. There are no Changes allowed in this range. All H&L packages are subject to Developers approvals. Please be aware that aspects of floorplan (including room dimensions) may change, including changes to comply with pending National Construction code (NCC 2022) if required. 5AB Homes reserves the right to withdraw or amend pricing, inclusions and promo without notice. T&C's apply.